



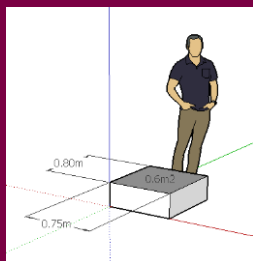
**Grow Green Planters Competition at  
RHS CHATSWORTH  
FLOWER SHOW  
6 – 10 June 2018**



## Competition brief

Grow Green Planters will focus on the importance of gardening and upcycling in a bid to preserve our environment, and help raise awareness of the physical and mental health benefits of gardening within schools and local communities. Grow Green Planters is a competition in support of existing RHS Campaigns; 'Greening Grey Britain', 'Campaign for School Gardening', 'Wild about Gardens', 'It's Your Neighbourhood' and 'Perfect for Pollinators'.

When choosing your planter it must be an upcycled



object and a minimum size of  $0.6\text{m}^2$   $0.75\text{m} \times 0.8\text{m}$  (see diagram left). Please consider how you will transport it to the site, think about the overall weight and ease of positioning the planter into place at the show.

Before completing your application form, please read through this document. It contains important information about:

- What happens next
- Key contacts
- Inspiration
- Competition Rules
- Attending the Show
- Judging and prizes
- Classroom chat ideas

## What happens next

Applications must be received no later than Friday 23 March 2018. Your completed application along with a colour photograph or drawing of your Grow Green Planter will be reviewed. If your application is accepted you will receive a confirmation email in April 2018.

Staging for the Grow Green Planter is to be undertaken by a maximum of four adult representatives on Monday 4 June only. The class (up to twenty children and four adults) involved in making the Grow Green Planter will have the opportunity to come to see the show on any show open day and a timetable of activities can be arranged for the school.\*

Judging by a panel will take place on the morning of Thursday 7 June, with winners announced that afternoon at the show and on the RHS website. Prizes are available for the top three entries as judged by the panel.

After the show the Grow Green Planters will be available for collection on Monday 11 June.

\*Schools must register their interest before 9 May 2018, - please contact the Assistant Show Manager for more information. A visit on any open day (Wednesday 6, Thursday 7, Friday 8, Saturday 9 or Sunday 10 June 2018) can be chosen but schools are advised that there will be a winner's presentation ceremony held on Friday 8 June, please see Judging and prizes.



# Inspiration



OLD HOUSEHOLD ITEMS



OLD FURNITURE



OLD CLOTHES



OLD GARDEN TOOLS



# Competition regulations

You must follow the below rules and regulations. Please make sure you have read them thoroughly and please do not hesitate to get in touch if you have any questions.

## Participation

Entries are welcomed from all primary/junior schools and conservation/wildlife clubs (up to age 11 or year 6) from the following counties of England: Derbyshire, Nottinghamshire, Leicestershire, Staffordshire, Warwickshire, Yorkshire and West Midlands.

Only **one** entry per school is permitted. If your school consists of both primary and junior education, an entry from each category will be permitted. Please make this clear on your application.

No charge is made for entering the competition.

The school or group **MUST** be registered with the RHS Campaign for School Gardening to be eligible to compete. It is easy and free to register with the RHS Campaign for School Gardening. To register visit the Campaign website [www.rhs.org.uk/schoolgardening](http://www.rhs.org.uk/schoolgardening) and read about the many benefits for teachers and students. Then click on 'Register your school now' to join the Campaign. Facebook: [facebook.com/rhsschoolgardening](https://www.facebook.com/rhsschoolgardening) Twitter: @RHSSchools

## Staging

**IMPORTANT NOTICE:** By law the show is deemed a building site up until the day the show opens. For your safety we have restricted staging to Monday 4 June where regulations are less restrictive. Please be aware that under 16's are not permitted anywhere on site at this time, including inside vehicles. **You will need to ensure you are wearing a high visibility vest (which can be purchased cheaply online) and sturdy footwear such as boots or trainers. Shoes that will not be permitted are crocs, open toe shoes and ballet pumps.**

Each school is responsible for bringing their Grow Green Planter to the show on Monday 4 June. These can be in modular parts to make it easier to transport and fit together on site, or as one piece. A maximum of four adults only will be permitted to access site to stage the Grow Green Planter.

A leveled area of ground will be provided. The entire site is an area of archeological significance so if you need to add stakes or pegs to support your planter you must have prior permission. Please arrange this via the Assistant Show Manager and if you foresee any problems please get in touch as soon as possible.

You must bring your own tools that are required for assembly. We will allow vehicle access where possible to drop off planters on Monday 4 June. There will still be a short walk so you are advised to bring a wheelbarrow or similar to transport your planter into position. Please be aware that once your planter is dropped off – due to the business of the site – you may be required to move your vehicle into the exhibitor car park, which is some distance away from the staging area.

## Grow Green Planter

Every Grow Green Planter must include 70 % plant material, most plants can be used, and we have provided a list of potential plants attached to the application form. Try to use a mix of seasonal plants that have both been grown from seeds by the children and that have been bought in to add a splash of colour.

The planters must be upcycled and can tell a story of your choice. It might be as simple as "High Summer Impact"

You may use tasteful props to accessorise or enhance your planter or help tell the story, for example, windmills, figurines, insects etc.

Grow Green Planters should be freestanding and secure. You must use recycled and upcycled materials but it is important that the planters are substantial and able to withstand all weather conditions.

Grow Green Planters have a minimum area of 0.6m<sup>2</sup> (0.75m x 0.8m of any height) and no maximum size. You are advised to think carefully about transportation and carrying, as there will be no staff on hand to help. They can be one piece or several smaller pieces that fit neatly together to meet this total size. There should be no loose or easily detachable parts. Artificial plant material should not be used.

## Risk Assessments

If accepted into the show each school will be required to submit a Confirmation of Attendance and Risk Assessment Form to the RHS (this is one form). The RHS will provide guidelines and an example risk assessment with the attendance confirmation. Passes to access the show will only be issued once the risk assessment has been received.

## Working Access Passes & wristbands

The RHS uses a secure photographic ID pass system. Each adult attending the show either in staging or on a show open day must be pre-registered with our pass company D2i. Schools will only receive the registration information once the Confirmation of Attendance and Risk Assessment Form has been submitted.

Children are permitted only on show open days and will receive a safety wrist band which has a place for a contact name and number to be written upon it. Please ensure that every child in your party wears this wristband for the duration of their attendance at the show.

## Collection

Grow Green Planters will be available for collection on Monday 11 June from 8am – 5pm. Please confirm with the show team what time you expect to arrive via the risk assessment form. **On this date, the site will resume being designated a building site by law, please refer to the Important Notice in the above Staging section regarding restrictions on site access, high-visibility vests and footwear.**

## Visiting the show

A maximum of twenty school children and four adult passes will be provided for each school to access the show on any one of the show open days (Wednesday 6, Thursday 7, Friday 8, Saturday 9 and Sunday 10 June). You can register 4 adults to attend during a show open day that can be different to those who attend for staging. A timetable of activities can be arranged for the school\*

On receipt of the schools confirmation of attendance and risk assessment, passes for adults and wristbands for children will be posted. Before arriving at the show schools must ensure that the child's name and a mobile telephone number for a supervisor is written onto each wristband.

If the adult representatives/chaperones attending the show during show week are different from the coordinator, please ensure they have the contact details of the Assistant Show Manager so that they can get directly in touch should they need anything or have any questions on their visit.

If friends and family would also like to come to the show, tickets can be purchased online at [www.rhs.org.uk](http://www.rhs.org.uk) or by calling 0844 338 7505.

\*Schools must register their interest for visiting the show by 9 May 2018 with the Assistant Show Manager. Any open day can be chosen for attendance but schools are advised that there will be a small winner's presentation ceremony held on Friday 8 June, please see Judging and prizes.

## Judging and prizes

Judging by a panel will take place on Thursday 7 June am, with winners announced on the afternoon of Friday 8 June at the show and on the RHS website. Prizes are available for the top three entries as judged by the panel.

There will be a small winners presentation ceremony held on Friday 8 June\*.

All schools will receive a certificate of participation

The prizes will be as follows:

- 1st Prize - £200 Garden Centre Vouchers
- 2nd Prize - £125 Garden Centre Vouchers
- 3rd Prize - £50 Garden Centre Vouchers

\*Schools wishing to ensure their attendance for the presentation ceremony are welcome to choose Friday 8 June as their visit day. Any schools visiting on other days will only be invited to the presentation ceremony if they are one of the top 3 chosen.







## Classroom chat ideas

When discussing the potential ideas with your class you could ask them to consider:

1. What different meanings are attached to the word green?
  - *Green to represent plants and gardening*
  - *Green as in good for our planet and environment*
  - *Maybe the planter could be coloured green*

2. What does seasonal planting mean?

*Plants that are best suited to a time of year and look their best in May/June.*

3. What plants are seasonal for May/June?

4. What are the benefits of gardening?

- *Feeling happier and healthier – spending time doing a physical activity like planting, how many muscles might you use? Fresh air, sunshine – vitamin D! Endorphins – positive feelings.*
- *Learning about planting – consider the weather, location of the planter, how much water and how much plant food needed.*

5. What are the benefits of upcycling?

- *Creativity and uniqueness – using different objects that you wouldn't usually use, like an old toilet or maybe an old wheelbarrow, perhaps something smaller like an old book or paint tin. You could even use up the last bits of paint in used tins to decorate the item.*
- *Helping the environment – giving something a new life instead of sending it to landfill.*
- *Reducing waste – tied into the above*



## Key Contacts

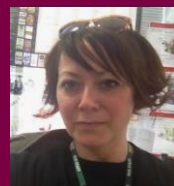
### Main contact

Assistant Show Manager:  
Ash Griffith  
Tel: 020 7821 3098  
E: [ashleighgriffith@rhs.org.uk](mailto:ashleighgriffith@rhs.org.uk)



### Other contacts

Show Manager:  
Liz Patterson  
Tel: 020 7821 3198  
E: [elizabethpatterson@rhs.org.uk](mailto:elizabethpatterson@rhs.org.uk)



Operations Manager:  
Amy Foster  
T: 020 7821 3665  
E: [amyfoster@rhs.org.uk](mailto:amyfoster@rhs.org.uk)



Deputy Operations Manager:  
Olivia Boswell  
T: 020 7821 3344  
E: [oliviaboswell@rhs.org.uk](mailto:oliviaboswell@rhs.org.uk)



Exhibitor Services Coordinator:  
[Exhibitorapplications@rhs.org.uk](mailto:Exhibitorapplications@rhs.org.uk)

Press Office  
T: 020 7821 3043  
E: [showspr@rhs.org.uk](mailto:showspr@rhs.org.uk)

Marketing Office  
T: 020 7821 3036  
E: [showsmarketing@rhs.org.uk](mailto:showsmarketing@rhs.org.uk)

Accounts Office  
T: 01483 479743  
F: 01483 212399

Shows Health & Safety  
T: 020 7821 3087  
E: [showshs@rhs.org.uk](mailto:showshs@rhs.org.uk)