

How to make a Gnome Hat

Make a gnome hat and dress up like a gnome while carrying out other Sherlock Gnomes related activities. Use art skills to make and decorate the hat.

Directions:

1. On A3 coloured sugar paper draw a large circle. For accuracy draw round a dinner plate or make a circle that is 28cm wide in diameter.
2. Find the centre of the circle and make a centre point.
3. Then draw a 45, 90 or 135 degree angle on your circle. This will determine the height and shape of your hat. If you want a smaller wider hat use a 45 degree angle, if you want a taller thinner hat use a 90 degree angle or larger.
4. Cut out your circle and along the angle line.
5. Bend the paper until you have a cone. This will be your hat. Make a light pencil mark to show where the overlap of paper comes to on your circle. This will stop you decorating the hidden paper.
6. Before you stick the hat together you will need to decorate it. You can add some gnomes to your hat or draw some garden items or plants on it.
7. Once you have finished, bend the paper round to the pencil mark you made earlier. Stick the paper overlap to the hat using sellotape or glue.
8. Use a paper punch to create two holes on opposite sides of your hat. Get some string or twine to make a hat string that will hold your hat in place. The string should reach from the holes to under the children's chins to ensure it stays on securely.

Hints and Tips

- Make your hats before you complete the Gnome Room. Your children can then pretend to be gnome detectives trying to find their gnome friends. You may like to use our online resource to make magnifying glasses too.
- Give your children some plant inspiration to decorate their hats by showing them pictures of plants or by taking them out into the garden.



Preparation

Purchase A3 coloured sugar paper. Try to get blue, red or green to tie in with the colours of the gnomes' hats from the movie.

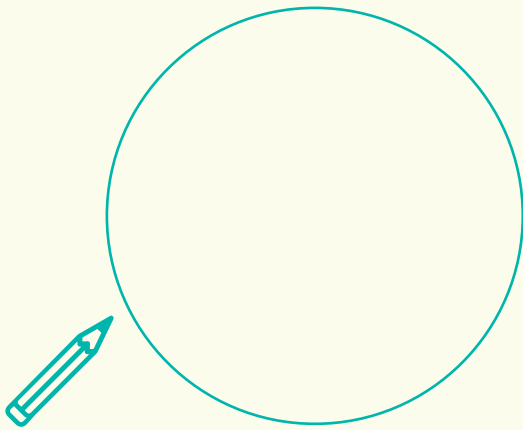
Before using string ensure children have no allergies to it.

Equipment needed

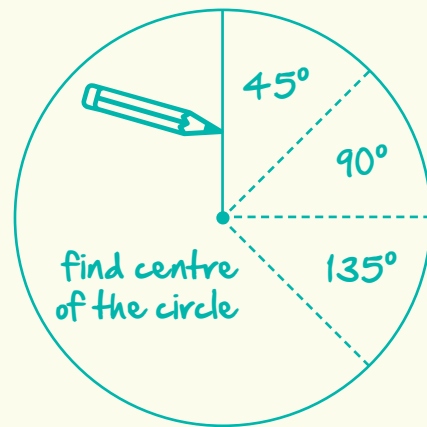
- A3 coloured sugar paper
- Pencils, pens or permanent markers
- Scissors
- A dinner plate
- Ruler
- Sellotape or glue
- Sherlock Gnomes characters
- String or twine
- Hole punch

How to make a Gnome Hat

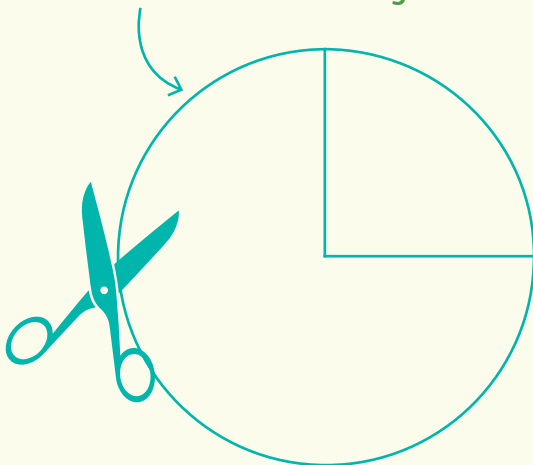
1. Draw a circle



2 & 3. Draw on the angle you want:



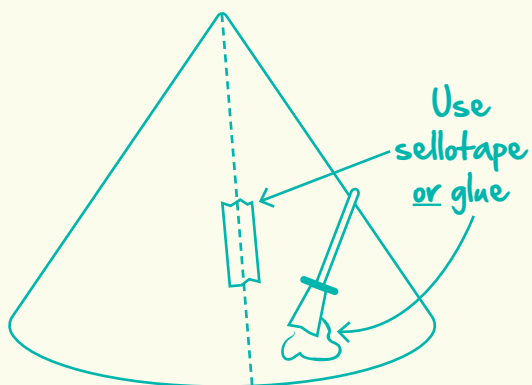
4. Cut out the circle and segment



5 & 6. Bend paper until you have a cone



7. Stick the hat together



8. Punch holes in opposite sides of hat

