



Royal
Horticultural
Society

Sharing the best in Gardening

**WORKSHOPS FOR
PRIMARY AND
SECONDARY SCHOOLS**
RHS GARDEN HARLOW CARR

Discover an inspiring garden where the imagination grows

The Royal Horticultural Society (RHS) is the UK's leading gardening charity. The RHS is committed to engaging children with the natural world of the garden and inspiring an understanding of science. Learning how to sow seeds and care for plants enthuses and encourages the next generation.

RHS Education and Learning offers a range of exciting workshops to suit all ages. Our workshops are run by enthusiastic, highly qualified teachers and are supported by experienced volunteers to provide a unique learning environment.

The RHS offers both guided workshops with an Education Officer and self-guided visits. Educational visits are free if pre-booked. Guided workshops are 1.75 hours in length and can be chosen from a selection in this brochure or tailor-made to your requirements.

Workshop activities are adapted to suit the age and needs of the visiting group and we offer discovery trails and activity ideas to complement self-guided visits.

Our school programmes are available to all, please speak to the Education Officers about any special needs or access requirements that you may have. Our garden is accessible for wheelchair users. We can offer safe, first class facilities to provide a special experience outside the classroom.

RHS Harlow Carr has achieved the Learning Outside the Classroom Quality Badge.





Contents

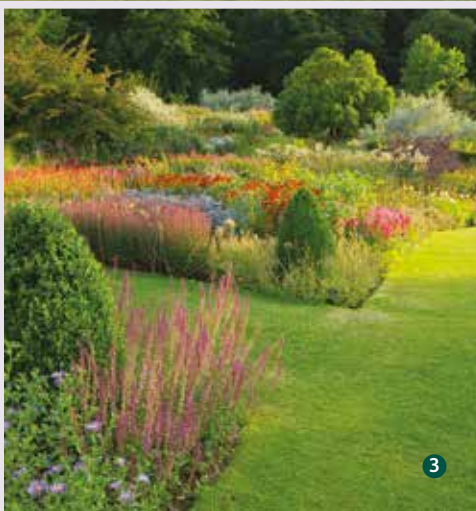
Garden Information	4
Foundation Stage	6
Key Stage 1	10
Key Stage 2	14
Key Stage 3 & Key Stage 4	18
Self-Guided Visits	20
RHS Campaign for School Gardening	21
Important Information	22
How to book	23
How to contact us	Back cover
How to find us	Back cover

Garden Information

RHS Garden Harlow Carr is the most northerly of the four RHS Gardens. With its challenging growing conditions it offers the ideal place to view what can be grown successfully in the region.



- 1 Logness Monster Outdoor Play
- 2 Montague Burton Teaching Garden
- 3 Main Borders
- 4 The Bramall Learning Centre
- 5 Productive Garden
- 6 Streamside





The Bramall Learning Centre

The Bramall Learning Centre is a stunning resource for schools to explore the wonders of RHS Harlow Carr. The garden is home to meadows, woodland, kitchen gardens and much, much more.

The Bramall Learning Centre was opened in 2010 as an exciting resource to support and enhance the curriculum for all ages and abilities.

The Mary Weston building is a fabulous example of sustainability. It's many features can teach us how to work closely with the environment, while the Montague Burton teaching garden and glasshouse can provide students with the opportunity to look at Carnivorous plants, see our vegetable beds, experience pond dipping and carry out practical horticultural activities.

The Centre is set in the beautiful gardens which support learning across the whole curriculum.

All our pre booked educational visits are free of charge. Come for the day and share your time between an Education officer led session and self guided exploration.



Foundation Stage

Our aim is to stimulate and capture children's curiosity about nature and gardening through exciting hands-on experiences.





Making Sense of the World

Available all year

Take a sensory journey around the garden helping 'Onion' the puppet to disguise his odour by making fragrant perfumes. See if you can find any of Onion's friends in the garden by using your senses and look for any seasonal jewels in the woodland to create amazing party crowns.



How Does Your Garden Grow

Available all year

Discover why we need plants and how they grow. Look at the seasons with Mr Tree and his friends. Join our woodland squirrel on a hunt around the garden with our seed collecting bags. Have a go at planting your own seeds in our teaching greenhouse and take them away and see how they grow.

"A great workshop, practical and enjoyable.
Harlow Carr is a great resource."



Incredible Edibles

Available all year

Find out which fruit and vegetables grow above or below the ground. Learn about edible plant parts. Play our vegetable treasure hunt. Chop, explore, pick and taste some of the seasonal offerings from our teaching garden.



Woodland Explorers

Available all year

Go on a woodland adventure where you will meet Dylan the dragon who will let you in on the magical secret of the woods. Build elf and fairy houses using natural materials (but sssshhhh, it's a secret!) Travel with us as we identify some of the leaves, flowers and trees that we see along the way.



Animal Detectives

Available April – September

Become a detective for a day. Help Acorn the puppet solve the mystery of 'Who is eating Harlow Carr?'. Visit two different habitats to collect clues and evidence to identify who the culprit is from a line up of suspects.



Nature's Fingerprints

Available all year

Turn plain cotton into vibrantly coloured cloth 'naturally'. Crush up petals, fruit and leaves to make natural dyes. Use these colours to paint strips of cotton and weave them into a nature frame. Explore the garden to search for plant materials to add to your nature frame.



Colour Crazy

Available all year

Whatever the time of year you visit RHS Garden Harlow Carr the garden is alive with colour. We will discover how colour is used in the natural world and help Colin the caterpillar find his missing coat. Explore the garden, looking for, matching and collecting plant colours to produce a rainbow of colour to leave in the garden for others to admire.

"It was brilliant and I loved all the colourful flowers."

Key Stage 1

Our aim is to stimulate and capture children's curiosity about nature and gardening through exciting hands-on experiences.



Making Sense of the World

Available all year

Take a sensory journey around the garden helping 'Onion' the puppet to disguise his odour by making fragrant perfumes. Use your senses to see if you can find any of Onion's seasonal jewels and use them to make amazing party crowns.



How Does Your Garden Grow

Available all year

From seed to flower we will grow a child! Identify the parts of the plant and their functions. Look at our amazing seed collections and then get the chance to plant your own seeds to take back to school. Hunt for different types of seeds on your journey around the garden.



Incredible Edibles

Available all year

Where do all of our fruit and vegetables originally come from? Discover how explorers brought them back from all over the world and see if you can guess where some of them originated.

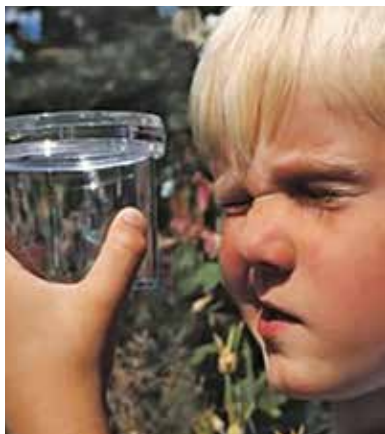
Learn about edible plant parts. Chop, explore, pick and taste some of the seasonal offerings from our teaching garden. Play our vegetable treasure hunt. Choose a favourite fruit or vegetable to sing about.



Woodland Explorers

Available all year

Wander through our woodland looking, listening and learning about the trees around us. Identify leaves, trees and seeds and choose your own special tree, recording your findings in a log book. Discover which trees are deciduous or evergreen. Create a deciduous tree using natural materials in the season that you visit.



Animal Detectives

Available April–September

Become a detective for a day. Help Acorn the puppet solve the mystery of 'Who is eating Harlow Carr?'. Use your detective skills in our different habitats to find Herbivores, Carnivores and Omnivores in the garden's food chain.



Nature's Fingerprints

Available all year

Become designers for a day! Look through our collection of fabric samples that are made from plant materials and choose the fabric for your new school uniform. Learn how different plants can dye cloth, and help to dye cotton and guess what colour it will change into? Complete the dye plant hunt in the teaching garden. Weave some dye plant samples into nature frames that you will make in the garden.



Colour Crazy

Available all year

Whatever the time of year you visit RHS Garden Harlow Carr the garden is alive with colourful flowers and foliage. We will discover how colour is used in the natural world and help Colin the caterpillar find his missing coat. Explore the garden, looking for, matching and collecting plant colours. Take a look through the 'colour glasses' and see the world in a different shade.



Sculpture

Available all year

How many sculptures can you spot hiding in the woods? RHS Garden Harlow Carr is filled with awe inspiring creativity, from the Giant's Tea Pot and Spade to the Bee and Flower sculptures around the garden. There are plenty of eye catching images to enthuse the artist in you. We shall take a look at the work of environmental artist Andy Goldsworthy and go into the Sculpture Glade to create our own team sculptures from the natural materials that we find



Sustainability

Available all year

How and why should we care for our planet? Stories will help us understand how easily we can harm the environment. The Bramall Learning Centre is a show piece of sustainability. Hunt around the Learning Centre and it's immediate surroundings for examples of renewable energy, energy saving technology and recycled materials. What can you and your school do to become more sustainable?

Key Stage 2

Key Stage 2 workshops offer the opportunity to explore and extend children's knowledge - bringing learning to life in a varied and stimulating environment.



How Does Your Garden Grow? Choose from either...

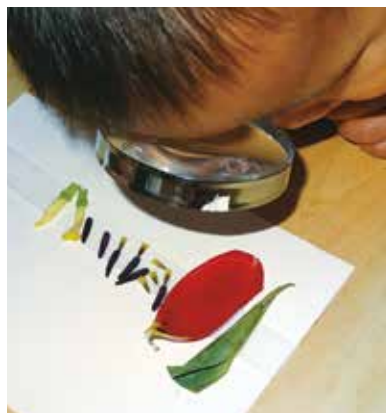


Plant Survival

Available September – March

How do plants make it from seed to adulthood? What clever tricks have evolved to ensure their survival? Explore our seed collection and discover their amazing adaptations for dispersal. We will visit one of a variety of fantastic areas in the garden to find out how remarkable plants can be and how they have adapted to their environment. Will you find the plants that wear suntan cream or the ones that eat meat?

OR



Plant Reproduction

Available April – July

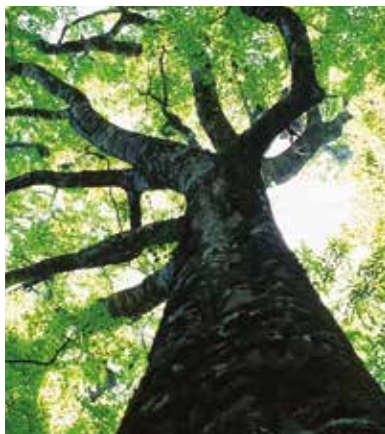
Identify the parts of a plant in detail by dissecting a flower. Look at how amazingly plants can reproduce themselves. Carry out vegetative propagation to produce new plants to grow back at school. Identify plants that reproduce in this way during a walk around the garden.



Incredible Edibles

Available all year

Take a journey of discovery around the garden and travel the world as a 'Plant Explorer' collecting stamps for your passports. Discover native and non-native plants and look at how some of what we eat has been genetically modified by scientists. Learn how Carl Linnaeus introduced plant classification. Complete your adventure with our 'Tropical Taste Test'.



Woodland Explorers

Available all year

Identify, measure and discover the age of amazing trees. What major events were happening in the world when they were planted? Observe and record the plants and animals that live under the largest plants on our planet using sampling techniques and keys.



Environmental Detectives

Available April – September

As 'Environmental Detectives' you will complete an Environmental Impact Assessment (EIA) in up to 3 locations around the garden using your tool kits. Identify and classify what's living in each of the habitats. What would the environmental impact be on the area if you were to build there? Through hands on practical exploration you will have the opportunity to understand the delicate balance of life.



Sustainability

Available all year

How and why should we care for our planet? Stories will help us understand how easily we can harm the environment. The Bramall Learning Centre is a show piece of sustainability. Hunt around the Learning Centre and its immediate surroundings for examples of renewable energy, energy saving technology and recycled materials. What can you and your school do to become more sustainable?

Art in the Garden

Choose from one of the four following workshops



Sculpitats

Available all year

RHS Garden Harlow Carr is filled with awe inspiring creativity, from the Giant's Tea Pot and Spade to the Bee and Flower sculptures around the garden there are plenty of eye catching images to enthuse the artist in you. We will go outside to collect natural materials and create our own 'Sculpitats', a cross between a sculpture and a habitat, in the Sculpture Glade. Whilst there you can see how many sculptures you can spot hiding in the woods.



Nature's Fingerprints

Available all year

Who stole the chocolate cake? Using your CSI skills identify from the samples given which fibre came from the thief's clothes. Continue your detective work outside using seasonal natural printing techniques to collect 'nature fingerprints'.



Mondrian Creations

Available all year

Replicating Mondrian's style of colour blocking go outside and collect natural materials to use to create your own masterpiece.



Inspired by Hockney

Available all year

Come and make your own 'Big Picture' imitating David Hockney's Yorkshire landscape, using Harlow Carr's amazing garden as inspiration.

Key Stage 3 and Key Stage 4

We have developed a range of activities that can be teacher led or self-guided for Key Stage 3 and Key Stage 4.

- Ecology practical activities
- Maths Problem Solving Trails
- Art workshops
- Orienteering and Maps
- Sustainability workshops

.....
The Bramall Learning Centre can also be booked for off site revision sessions.





Please contact the Education Team on **01423 724646** to discuss your needs.



Self-Guided Visits

Schools are welcome to book a self-guided visit to the garden. **Booking is essential for Guided and Self-Guided visits.** All teachers organising a visit must book a pre-visit to discuss ideas and activities for your day.

We have a range of materials and activities for self-guided groups to ensure you get the most out of your visit. These can be viewed and downloaded from our website.

- Pre and post visit lesson plans
- Worksheets linked to the curriculum
- Information on writing a risk assessment for your visit
- Schools focussed maps

Several areas of the garden lend themselves to science teaching. The Teaching and Productive Gardens are ideal places to engage with issues such as food production and sustainability. The garden can be used for small-scale ecological studies and the South Field and Meadow areas are excellent locations for studying variation between and within plant species.

In addition to our work with science and environment groups, we regularly welcome students of art and design to Harlow Carr and examples of their work can be seen on display in the Bramall Learning Centre.

Self-guided visits are free but the RHS expects that students are supervised at all times by accompanying adults.

As we are a sustainable garden we ask visiting groups to take part in 'The Lunch Box challenge', to bring a healthy lunch which results in no landfill waste.



RHS CAMPAIGN FOR SCHOOL GARDENING

The RHS Campaign for School Gardening is an initiative designed to support all schools through the development of their own garden within the school grounds and encourage children to enjoy actively using the garden.

It is free for schools to register to the Campaign upon which they will receive a free starter pack. Schools also have access to a huge host of useful resources, curriculum links, gardening advice from our Regional Advisors and information on how to find funding.

School Gardening Awards

To encourage schools to develop and maintain their garden areas, the School Gardening Awards is a step-by-step reward scheme which takes pupils through each stage of gardening from planning and designing to more advanced skills such as taking cuttings, making raised bed kits and constructing compost bins. Upon completion of each level, the school is awarded a prize including seeds, books and vouchers.

School Gardening Training Courses

The Campaign offers an extensive programme of teacher training courses designed to:

- enthuse and support teachers in developing and using gardens in schools
- support progression through the School Gardening Awards
- encourage and advise teaching of the National Curriculum both inside and outside the classroom using, plants, gardens, school grounds and environmental areas
- improve knowledge and understanding of plants and gardening

Learn more about the Campaign and register free at rhs.org.uk/schoolgardening



Important Information

Admission

The RHS is the UK's leading gardening charity and all educational visits to RHS gardens are FREE. Visits must be booked in advance; this includes the guided and self-guided visits. If you feel able to give a donation to the RHS to help support our educational work this would be much appreciated. We ask you to consider a donation of £3 per child for your visit.

Pre-visits

We ask all teachers to come to the garden and attend a pre-visit presentation to meet with an Education Officer to discuss your visit requirements and any changes in the garden that may be taking place. Pre-visit dates can be found on your booking form. Alternatively, please phone **01423 724646** to make an appointment.

On the day

The coach drop off point is adjacent to the shop. The pick up point is on the other side of the Crag Lane by the pedestrian crossing. Please send one staff member to report to the entrance on arrival before the children leave the coach. You will then be directed to the Bramall Learning Centre where you will be met by the Education Team.

Adult supervision

Adults must accompany their groups at all times for health and safety reasons. Please see the information contained in the 'Requirements for school groups' leaflet or accessed through the RHS website: rhs.org.uk

Ratios

Special Needs	1:1
Foundation Stage	1:4
Years 1-3	1:6
Years 4-6	1:8
All others	1:10

These may include volunteer helpers.

Lunches

We encourage schools to bring healthy packed lunches that result in the least amount of landfill waste possible. (Please take this home with you.) Visit our website to see how you can take part in the 'Lunch box Challenge.'

Risk Assessments and Health and Safety

Supporting information to help you write your visit risk assessment will be sent to you with your booking form or can be accessed from rhs.org.uk/learning/education/schoolvisits.asp

Children must be supervised at all times by accompanying adults.

Access

Please speak to the Education Officers about any special needs or access requirements that you may have. Our gardens are accessible for wheelchair use.

Come rain or shine

All our programmes include outdoor experiences in the garden. Please ensure that your children are dressed sensibly for the weather, with suitable footwear and appropriate clothing regardless of the season!

First Aid

There is First Aid cover in the Garden in case of an emergency. RHS staff will only carry out first aid under the direction and authority of an accompanying school staff member.

Allergies

Please inform Education Officers about any allergies (children and accompanying adults) before you visit the garden.



How to book

Booking is essential for all educational groups who would like to visit the garden, either as a self-guided or Education Officer led visit. We recommend booking your visit well in advance to avoid disappointment.

How to book a visit

Call the Education Team on **01423 724646** or email: schoolsharlowcarr@rhs.org.uk

Discuss your requirements with a member of the Education team and make a provisional booking. The minimum number for a guided visit with an Education Officer is 15 children with accompanying adults (Mainstream schools).

We will send you a booking form to complete and return. You will also be sent health and safety information for making risk assessments and guidance and responsibilities for your visit. Please ensure you have read 'Important information for schools visiting RHS Garden Harlow Carr.'

Your booking will be made permanent when we receive your completed booking form by post. Please note that we do not send a letter of confirmation for your visit.

Top tips for planning your visit

Make a pre-visit to discuss your visit requirements with an Education Officer and familiarise yourself with the garden.

Use the pre and post visit lesson plans available on the RHS website in the learning and education section to support your visit.



For an alternative format of this brochure, please call 01423 724646 or email: schoolsharlowcarr@rhs.org.uk

HOW TO CONTACT US

By post

Education and Learning
RHS Garden Harlow Carr
Crag Lane
Harrogate HG3 1QB

By telephone

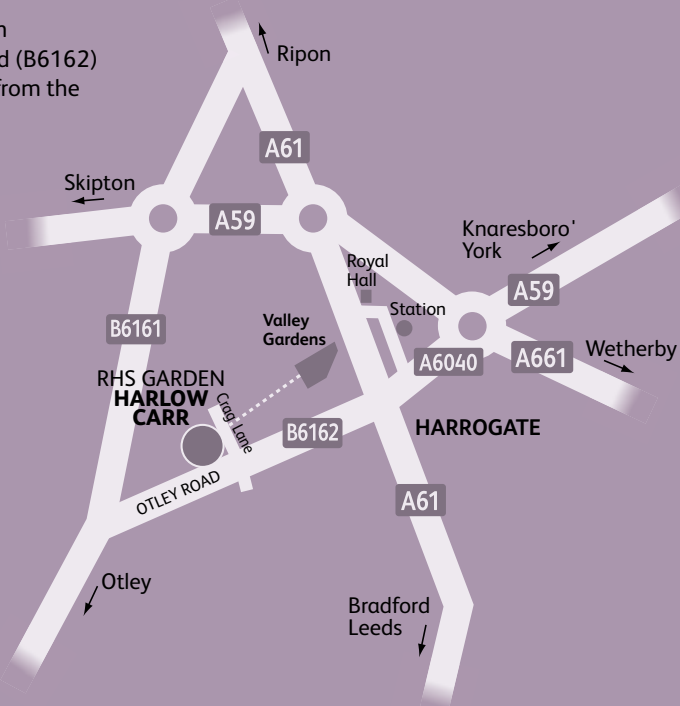
Booking and Enquiries
01423 724646
Monday – Friday, 9am – 5pm

By e-mail

schoolsharlowcarr@rhs.org.uk

HOW TO FIND US

The garden is situated on Crag Lane, off Otley Road (B6162) about a mile and a half from the centre of Harrogate. Parking is free.



rhs.org.uk/harlowcarr

Follow us on



RHS Registered Charity No: 222879/SC038262



This brochure is printed on paper from a sustainable source. Please recycle or pass this brochure on.