

## Invisible garden

Name: \_\_\_\_\_

### Looking at invertebrates under the microscope

#### Honeybee



How many main body parts do insects have? How many legs? How many wings?

Number of:

Body parts:  legs:  wings:

Honeybees are social insects – what does this mean?

---



---



---

#### Ladybird

Ladybird larvae look quite different to the adults and undergo metamorphosis - why might they have different bodies in different stages of the life cycle?

---



---



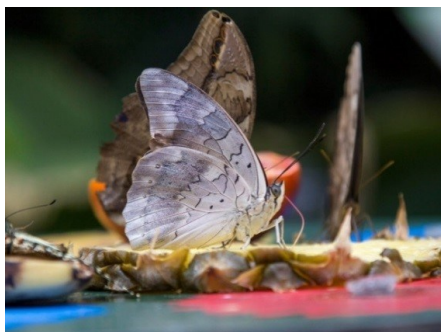
---



Harlequin ladybird larvae

What species of ladybird is in the petri-dish? \_\_\_\_\_

#### Butterflies and moths



What are the benefits of having scales on your wings?

---



---

Butterflies and moths have much longer proboscises than bees - how might this help them? \_\_\_\_\_

#### Bramble leaf-mining moth

The caterpillars of this moth live inside the leaves, eating the track you can see. Why might this be a good lifestyle choice?

---



---



---



Photo © Ian Kimber. Moth size 6mm

## Slug



*Testacella haliotidea*

Can you see the breathing pore?

Yes ☐ No ☐ Not sure ☐

Do slugs have shells?

---

---

## Millipede

How many pairs of legs are on each segment of the millipede's body?

Number of legs

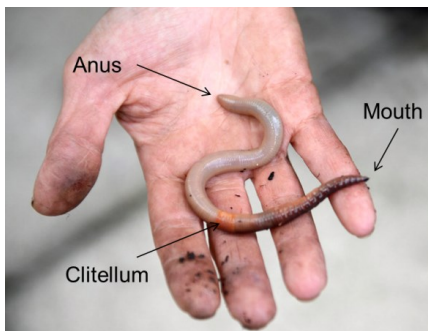
Millipedes are detritivores, what does this mean they eat?

---

---



## Earthworm



Can you see the tiny bristles that help a worm move (setae)?

Yes ☐ No ☐ Not sure ☐

Why are worms good to have in your garden?

---

---

## Woodlouse

How many legs does a woodlouse have?

Number of legs \_\_\_\_\_

Can you see the uropods (small tube like tails)?

Yes ☐ No ☐ Not sure ☐

